

PRECALVING PROTECT

A DIETETIC COMPLIMENTARY MINERAL FEED FOR BOVINES (BOLUS) WHICH PROTECTS THE ANIMAL DURING DRY AND POST CALVING PERIODS



1. Nutritrace Precalving Protect bolus is a slow release cattle supplement designed to protect the animal during the dry and post calving period.
2. Each bolus provides a continuous supply of trace elements and vitamins to the animal for 3 months.

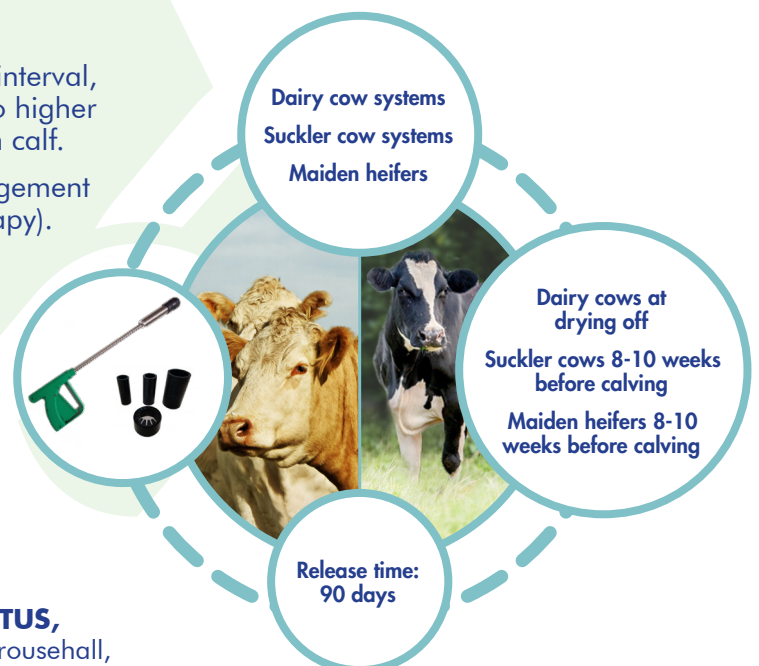
NUTRITIONAL ADDITIVES (SOURCE IN BRACKETS):

Mineral Composition	mg/kg	mg/day (2 Bolus)
Magnesium	51,000	85

Trace Elements	mg/kg	mg/day (2 Bolus)
Zinc (3b603 - Zinc oxide)	228,750	381
Copper (3b404 - Copper (II) oxide)	75,000	125
Manganese (3b502 - Manganese (II) oxide)	80,600	134
Iodine (3b202 - Calcium iodate, anhydrous)	22,000	36.7
Cobalt (3b303 - Cobalt (II) carbonate hydroxide (2:3) monohydrate)	8,000	13.3
Selenium (3b801 - Sodium selenite)	2,250	3.8

Vitamins and Provitamins		(2 Bolus)
Vitamin E (3a700 - All-rac-alpha-tocopheryl acetate)	50,000 mg/kg	83.3 mg/day

3. Precalving Protect contributes to the reduction in incidences of retained placentas, reduces calving interval, better calving performance and also contributes to higher quality colostrum being produced for the newborn calf.
4. Cows can be bloused during other dry cow management tasks such as intramammary tubing (dry cow therapy).
5. Administer 2 bolus of 75g for all adult breeding animals over 400kg. Treat dairy cows at drying off. Treat suckler cows and maiden heifers 6-8 weeks before calving.
6. Release time: 90 days
7. Pack size: 50 x 75g bolus.
8. Shelf life: 18 months from date of manufacture.
9. Always use the approved Nutritrace bolus applicator.



AUCTUS,
Unit 3, Grousehall,
Loughduff, Co. Cavan, Ireland.

P: +353 43 6683200
F: +353 43 6683210
E: info@auctus.ie
W: www.auctus.ie