

PHOSCAL PLUS

A DIETETIC COMPLIMENTARY MINERAL FEED FOR DAIRY COWS (BOLUS) FOR THE REDUCTION IN THE RISK OF MILK FEVER THROUGH THE SUPPLY OF FOUR CALCIUM SOURCES

NUTRITRACE

1. The formulation of Nutritrace Phoscal Plus dramatically reduces the risk of milk fever in dairy cows. The bolus is a fast acting multiple calcium source supplement absorbed into the blood stream instantaneous.
2. Each bolus contains four calcium sources. Calcium chloride is absorbed instantaneously while Calcium Formate, Dicalcium Phosphorus and Calcium Acetate give a sustained supply of calcium over the required period.

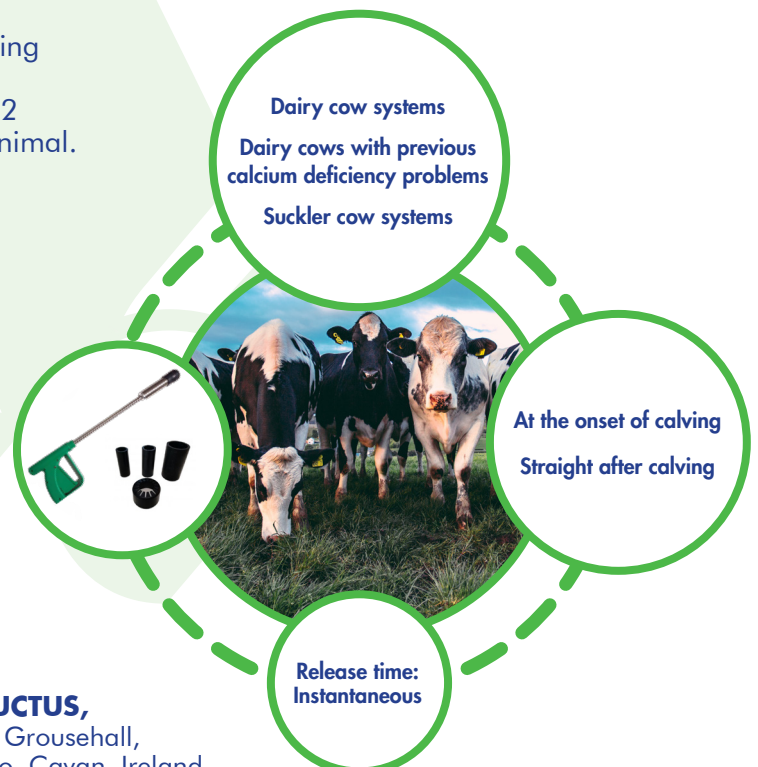


NUTRITIONAL ADDITIVES (SOURCE IN BRACKETS):

Mineral Composition	mg/kg	mg/day (4 Bolus)
Calcium (Calcium Formate, Calcium Chloride, Dicalcium Phosphate, Calcium Acetate)	225,000	90,000
Phosphorus	49,000	19,600
Magnesium	7,000	2,800

Vitamins and Provitamins		(4 Bolus)
Vitamin D3 (3a671 - Cholecalciferol)	200,000 IU/kg	80,000 IU/day

3. Administer 4 bolus of 100g on the onset of calving and a further 2 bolus 6 hours later to cows and heifers. Another 2 bolus may be administered 12 hours later depending on the condition of the animal.
4. Release time: Instantaneous
5. Pack size: 30 x 100g
6. Shelf life: 18 months from date of manufacture.
7. Always use the approved Nutritrace bolus applicator.



AUCTUS,
Unit 3, Grousehall,
Loughduff, Co. Cavan, Ireland.
P: +353 43 6683200
F: +353 43 6683210
E: info@auctus.ie
W: www.auctus.ie