

A DIETETIC COMPLIMENTARY MINERAL FEED FOR BOVINES (BOLUS) WITH A LONG TERM SUPPLY OF TRACE ELEMENTS AND VITAMINS FOR GRAZING ANIMALS ON PASTURE OR OUTWINTERING ON FORAGE CROPS

NUTRITRACE



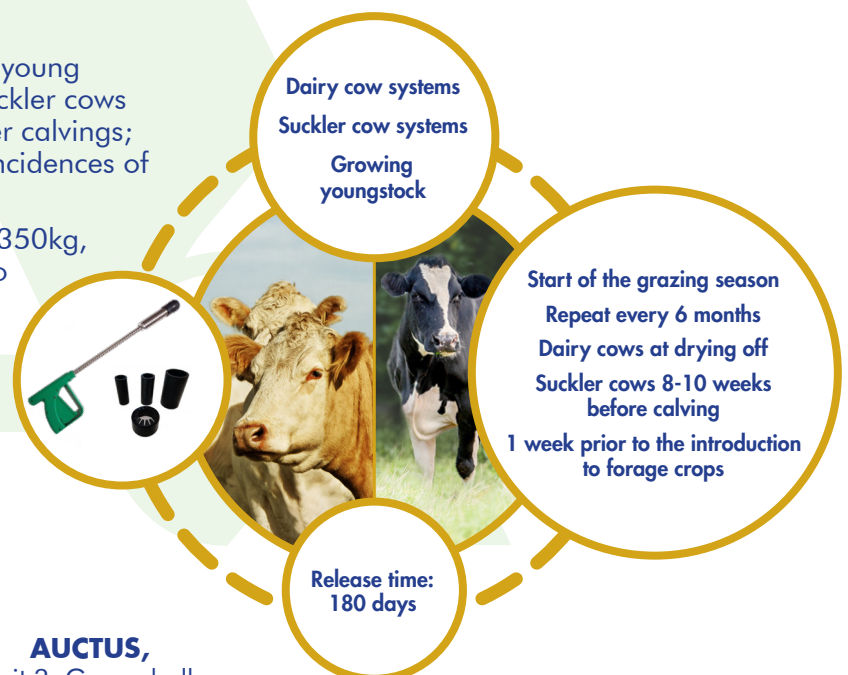
1. Nutritrace OPTI 180 bolus are designed to provide essential trace elements and vitamins at times of stress to the animal.
2. Each bolus is formulated to help prevent trace element deficiencies and improve the overall herd health of the animal.

NUTRITIONAL ADDITIVES (SOURCE IN BRACKETS):

Trace Elements	mg/kg	mg/day (2 Bolus)
Zinc (3b603 - Zinc oxide)	270,075	225
Copper (3b404 - Copper (II) oxide)	100,050	83.5
Manganese (3b502 - Manganese (II) oxide)	105,000	87.5
Iodine (3b202 - Calcium iodate, anhydrous)	25,000	21
Cobalt (3b303 - Cobalt (II) carbonate hydroxide (2:3) monohydrate)	5,000	4.2
Selenium (3b801 - Sodium selenite)	2,500	2.1

Vitamins and Provitamins		(2 Bolus)
Vitamin A (3a672a - Retinyl acetate)	5,000,000 IU/kg	4,167 IU/day
Vitamin D3 (3a671 - Cholecalciferol)	1,000,000 IU/kg	833 IU/day
Vitamin E (3a700 - All-rac-alpha-tocopheryl acetate)	20,000 mg/kg	16.7 mg/day

3. OPTI 180 aims to optimise growth rates in young livestock. Bolus application to dairy and suckler cows aids in: maximising conception rates; easier calvings; healthier calves when born and reducing incidences of retained placenta's.
4. Administer 2 bolus of 75g to bovines over 350kg, suckler and dairy cows or 1 bolus of 75g to bovines 200-350kg.
5. Release time: 180 days.
6. Pack size: 50 x 75g.
7. Shelf life: 18 months from date of manufacture.
8. Always use the approved Nutritrace bolus applicator.



AUCTUS,
Unit 3, Grousehall,
Loughduff, Co. Cavan, Ireland.

P: +353 43 6683200
F: +353 43 6683210
E: info@auctus.ie
W: www.auctus.ie